

CITY OF MADISON - DOOR CREEK PARK CONNECTION

PROJECT OWNER:
 CITY OF MADISON
 TALETHA SKAR
 210 MARTIN LUTHER KING BLVD RM 500
 MADISON, WI 53703

PROJECT ENGINEER:
 MULTIMEDIA COMMUNICATIONS & ENGINEERING, INC.
 CONTACT: DAN BECKER
 FIBER OPTIC NETWORK SPECIALIST
 PO BOX 11064
 GREEN BAY, WI 54307
 PH. 920-301-7900 EXT. 1002
 EMAIL: dbecker@mcewi.com

DESIGNED BY:
 MULTIMEDIA COMMUNICATIONS & ENGINEERING, INC.
 CONTACT: SAM FRISBIE
 OSP ENGINEER
 PH. 920-301-7900 EXT. 1005
 EMAIL: sfrisbie@mcewi.com

PERMITS REQUIRED:
 CITY OF MADISON RIGHT OF WAY PERMIT

TABLE OF CONTENTS:
 TITLE PAGE
 OVERVIEW PAGE
 EROSION CONTROL BMP
 PLACEMENT GUIDELINES
 SCALED 1:50 SHEETS (7 PAGES)

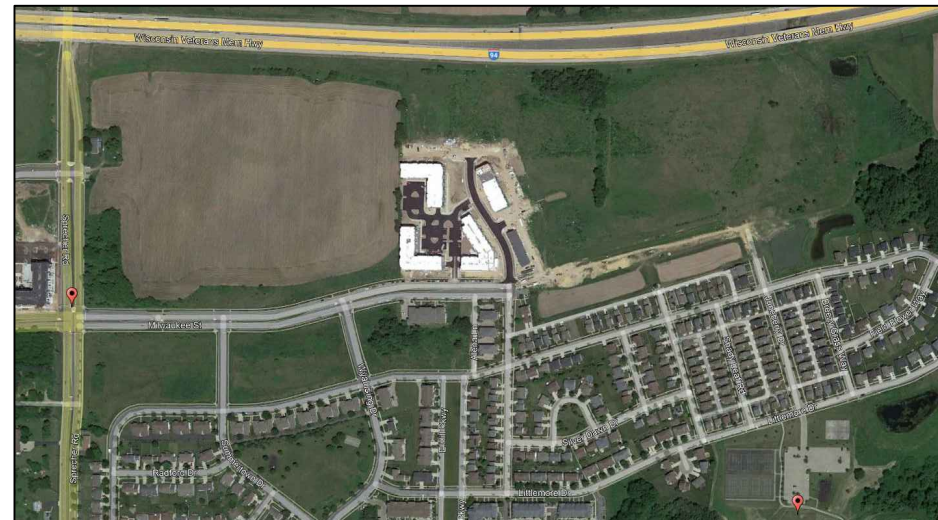


Contract # 8767

Project Location City of Madison, WI



CALL DIGGERS HOTLINE 3 DAYS BEFORE DIGGING:
 AT 811 OR (800) 242-8511
 EMERGENCY ONLY: (262) 432-7910



ALL UNDERGROUND UTILITY LOCATIONS SHOWN ARE APPROXIMATE. UTILITY INFORMATION WAS PROVIDED IN RESPONSE TO PLANNING LOCATE REQUESTS. CONSTRUCTION CONTRACTOR IS RESPONSIBLE FOR DETERMINING THE LOCATION OF MUNICIPAL AND PRIVATE UTILITIES; COMPLETE REPAIR OF ANY AND ALL DAMAGES & RESTORATION INCURRED SHALL BE AT THE EXPENSE OF THE CONTRACTOR. FACILITY PLACEMENT SUBJECT TO CHANGE UPON FIELD LOCATE COMPLETION.

RIGHTS-OF-WAY ARE DEPICTED BASED ON FIELD OBSERVATIONS AND THE LATEST STATE AND COUNTY RECORDS AVAILABLE.

DISCLAIMER:

Locations are approximate. This data has been prepared, in part, based upon information furnished by others. While this information is believed to be reliable, Multimedia Communications & Engineering, Inc. (MC&E) assumes no responsibility for the accuracy of this data or for any errors or omissions that may have been incorporated into it as a result of incorrect information provided to MC&E. Those relying on this data are advised to obtain independent verification of its accuracy.
 Tickets -

COORDINATE SYSTEM: HARN/WI.DaneWI-F

Legend

= Telco	= Fiber Ped	= Manhole
= Cable TV	= Electric Ped	= Utility Pole
= Electric	= Telco Ped	= Power Pole
= Gas	= Cable TV Ped	= Power Transformer Pole
= Water	= Traffic Control Box	= Street Light
= Sanitary Sewer	= Electric Transformer	= Pole Anchor
= Storm Sewer	= Gas Valve	= Aerial Fiber
= Private Fiber Optic	= Water Valve	= Overhead Guy
= New Underground Fiber	= Fire Hydrant	= Aerial Expansion Loop
= Existing Underground Fiber	= Catch Basin	= Aerial Splice
= New Handhole	= Round Catch Basin	= Standoff
= Existing Handhole		= Culvert
= Locate Station		= Railroad Light
		= Traffic Light
		= Pull Box
		= Tree
		Typical Install Depth is 36"



Multimedia Communications & Engineering, Inc.
 PO Box 11064 Green Bay, WI 54307
 P: 920.301.7900 | 877.870.6968



CITY OF MADISON
 DOOR CREEK PARK CONNECTION

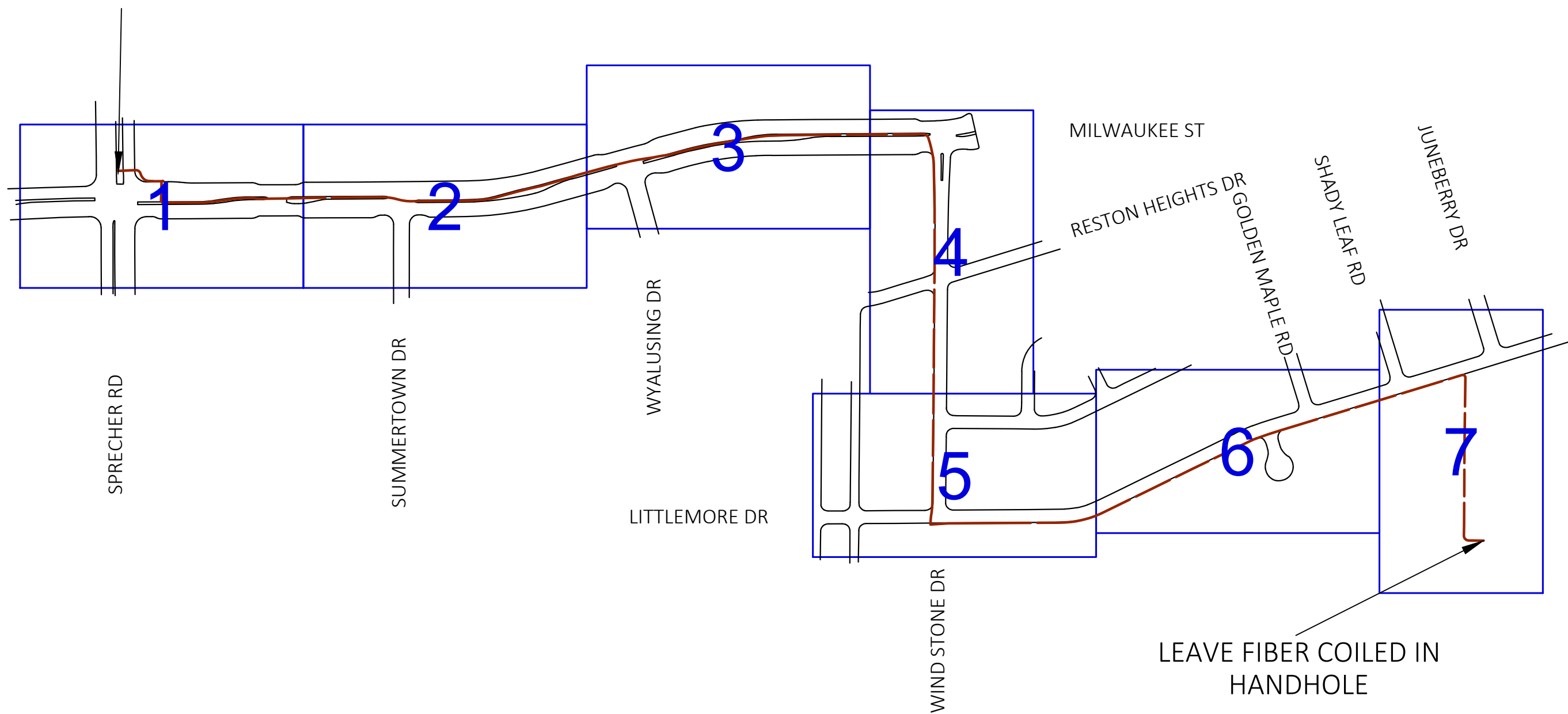
SHEET GROUP:
 COVER SHEET

SHEET ID:
 CS1

Print Date: 8.3.2023

Page 1 of 11

CITY OF MADISON
SPLICE POINT



EXCAVATIONS

Excavations shall not remain open in excess of 24 hours unless specific permission is obtained from the City Engineer.

In all streets, alleys, sidewalks or other public ways, whether improved or unimproved, all excavated material shall be removed and the trench shall be backfilled with flow-able filled slurry mix.

At no time can spoils or other debris be stored or piled in the street gutter.

Excavation stock piling must remain within the public right of way and cannot be placed on or impede any roadways, driveways, sidewalks, or fire hydrants. Any areas that have minimal public right of way available must stock pile the excavated material on a truck bed or trailer. No stock piling of excavated material will be allowed on private property.

Excavations are to remain outside of wetland areas. All excavations must have proper erosion control practices to prevent stock piled materials from entering wetland areas.

Excavations are to remain 75' from the high-water mark of and waterway. Any excavations must have proper erosion control practices to prevent stock piled materials from entering waterways.

EROSION CONTROL PLAN

Any prolonged open excavations or standing debris piles will require erosion control practices such as sandbagging, placing hay bales, or silt fencing around the area.

The Contractor must employ the following good housekeeping practices that will prevent the ingress of any excavated materials into the Municipal storm water system:

- 1) Cover Storm Sewer Inlet with DOT Filter Fabric (DOT Type FF, not felt or silt fence material) near areas where excavation and directional drilling operations occur. DOT Type C Inlet protection standards apply (2x4 across back of inlet with DOT Filter Fabric over inlet held in place by inlet cover). Type D Inlet Protection including waddles (fiber filled filter socks) around drains to prevent debris from entering the storm sewer system are required at any low area inlets.
- 2) Place Silt Fence Barrier around excavation per below typical specification Diagram. Silt Fence to be inspected prior to excavation.
- 3) Place Sand Bag Barrier around Spoils to prevent runoff ingress into Storm Water Management System.
- 4) Protect graded restoration area using fibrous matting to prevent erosion into Storm Water Management System
- 5) Place temporary soil stabilization materials to prevent erosion into Storm Water Management System.

All erosion control measures shall be inspected on a weekly basis and/or after ½" or more of rainfall to ensure the effectiveness of the erosion control measures.

All excavation and trenches shall be covered and/or properly barricaded after working hours and over the weekends.

DEWATERING

Dewatering of pits, trenches, hanholes, or manholes must be done with the use of a sediment bag, a straw bale dewatering basin, or approved equivalent. All dewatering procedures must meet or exceed state standards. All Vacuum Excavation spoils are to be transported and disposed of offsite at an approved dumping station. Dewatering is expected to be negligible given the depth of installation and the nature of the directional boring operations for this project.

FRAC-OUT CONTINGENCY PLAN

Boring activities and bore path are to be continually monitored to observe potential frac-outs. Erosion control materials are to be accessible and onsite should a frac-out occur. Acceptable materials include silt fence, straw bales, and sand bags. As soon as a frac-out is discovered, erosion control must immediately be implemented around the frac-out material (bentonite-water mixture). A vacuum excavation machine is to be accessible on short notice to clean any frac-out material should it occur.

RESTORATION

The Contractor may be allowed to mechanically core through hard surface streets to locate existing utilities provided that the restoration of the core be performed per the specific requirements of the Municipality or Agency having jurisdiction. Core holes must be backfilled with a slurry mixture as specified by the DOT per permitting requirements. The original Concrete or Asphalt core can then be replaced using Plug and Epoxy method.

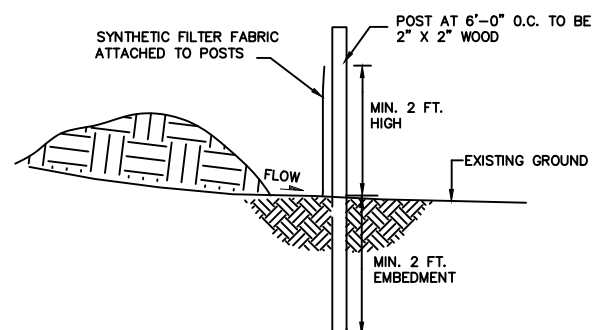
Potholing is not allowed in ADA compliant or non-compliant pedestrian ramps. Any hard surface excavations within any pedestrian ramp panels will result in the Contractor's replacement of the entire ADA Compliant panel, along with adjacent panels at the Contractor's expense.

At no time can the Contractor perform any excavation that undermines the adjacent in-tact surfaces, thereby making vertical mechanical compaction impossible and creating future potential for subsurface failure. This scenario will result in the replacement of the effected hard-surface to the permitting authority's specifications.

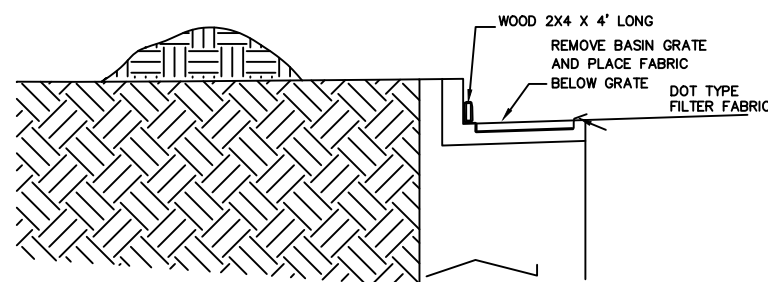
All disturbed lawns, vegetation, flowers, shrubbery, trees, landscaping, etc. must be replaced or restored to its previous condition or better. Lawn repair will require a minimum of 6" of black dirt and municipal approved grass blends are to be applied.

All areas of restoration using Black Dirt and Seed must be protected with biodegradable net-free fibrous matting. Placement of loose straw or other materials that can be easily blown away or otherwise eroded/removed from the restored area will not be permitted. Fibrous matting materials will must be included in the Contractor Cut Sheets and approved by the Owner for use prior to placement.

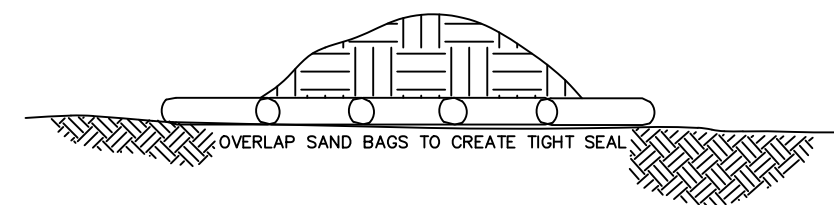
Silt Fence Erosion Control:



Storm Inlet / Catch Basin Erosion Control:



Sand Bag Barrier Erosion Control:



CONSTRUCTION QUANTITIES

Description of Work

The purpose of this project is to create a connection between an existing splice point at the intersection of Milwaukee St. and Sprecher Rd. and a new shelter being built at Door Creek Park. The new duct pack will be a (2) – 2" and (1) – 1.25" ducts with a single 24 strand fiber optic cable.

Use of Quantities Shown

The following lists represent a high-level overview of the project tasks associated with each portion of the project and should not be solely relied on for bidding purposes. It is the Contractors responsibility to thoroughly review and calculate their own quantities and footages in order to complete this project as outlined in this document. The Bid amount must be adequate to fulfill the intent of the entire project.

1) Directional Bore – 2–2" & 1–1.25" duct pack –	5,186'
2) Place 1–3" duct in HH 7–4 and leave stubbed next to HH	10'
3) Place Type I 17x30x24 Handhole –	10
4) Place Type V 24x36x24 Handhole –	4
5) Place Type VII 30x48x36 Handhole –	5
6) Install 24 strand fiber optic cable inside new empty 2" duct –	5,186'
7) Install expansion loop inside handholes –	1,050'
8) Install #10 stranded, jacketed, copper tracer wire inside 2" duct –	5,186'
9) Install 1800–pound mule tape – Carlon TL38203 or equivalent inside 2" duct –	5,186'
Splice individual fiber strands inside outdoor splice case –	24 total – 24 in one case

Contractor to spot check depth of the following utilities from accessible drains/valves/manholes:

- Water
- Sanitary Sewer
- Storm
- Gas
- Electric

Contractor may need to locate some sanitary laterals under driveway aprons.

City Provided Material List

The City of Madison will not be providing any materials for this project.

Contractor Provided Material List

The Contractor must purchase and provide all the following materials for this project:

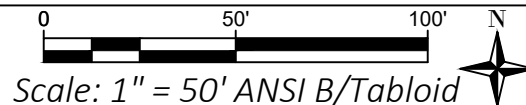
1. All outside plant Fiber Optic cables – 24 Strand Singlemode OS2 Glass; loose tube, single armor; single jacket construction.
2. Underground Plowduct – 2" inside diameter first-run SDR-11 HDPE Orange smooth exterior/smooth interior with mule tape. Carlon A13C6N1JNNE (2"), or equivalent.
3. Underground Plowduct – 1.25" inside diameter first-run SDR-11 HDPE Orange smooth exterior/smooth interior with mule tape. Carlon A6C6N1JNNE (1.25"), or equivalent.
4. Underground Plowduct – 3" inside diameter first-run SDR-11 HDPE Orange smooth exterior/smooth interior with mule tape. Carlon A16C6N1JNNA (3"), or equivalent.
5. TYPE I Flush-mount Handhole – Composite concrete fiberglass construction 17"x24"x24h" with 2 bolt extra heavy duty cover marked "Fiber Optics". Quazite #PG1730BB24 Base / #PG1724HH21 (ANSI Tier 22) Cover, or equivalent.
6. TYPE V Flush-mount Handhole – Composite concrete fiberglass construction 24"x36"x24h" with 2 bolt extra heavy duty cover marked "Fiber Optics". Quazite #PG2436BB24 Base / #PG2436HH21 (ANSI Tier 22) Cover, or equivalent
7. TYPE VII Flush-mount Handhole – Composite concrete fiberglass construction 30"x48"x36h" with 2 bolt extra heavy duty cover marked "Fiber Optics". Quazite #PG3048BB36 Base / #PG3048HH21 (ANSI Tier 22) 2-piece Cover, or equivalent.
8. 1800–pound mule tape – Carlon TL38203 or equivalent.
9. Locate Wire – #10 AWG UL TYPE USE 2/RHH/RHW-2. Non–manufacturer specific.
10. Split Duct Plug – 2" & 1.25" outside diameter split plugs with interior port diameter sufficient for cable size. Carlon or equivalent.
11. Fusion Splice Sleeves – Clear heat shrink fusion splice sleeve with steel reinforcing rod. Non–manufacturer specific.
12. Fiber Optic Cable Labels – Labelled with Owner – Strand Count – Start Point – End Point.
13. Consumables and Installation hardware – Contractor required consumables for the installation of all the above items per these Request for Bid Documents.
14. Biodegradable Net–Free matting designed for short term use similar to the American Excelsior Company's Curlex ® CL Blanket.

Contractor Completion Clause

The Contractor is required to complete the installation with the material included in their Bid response.



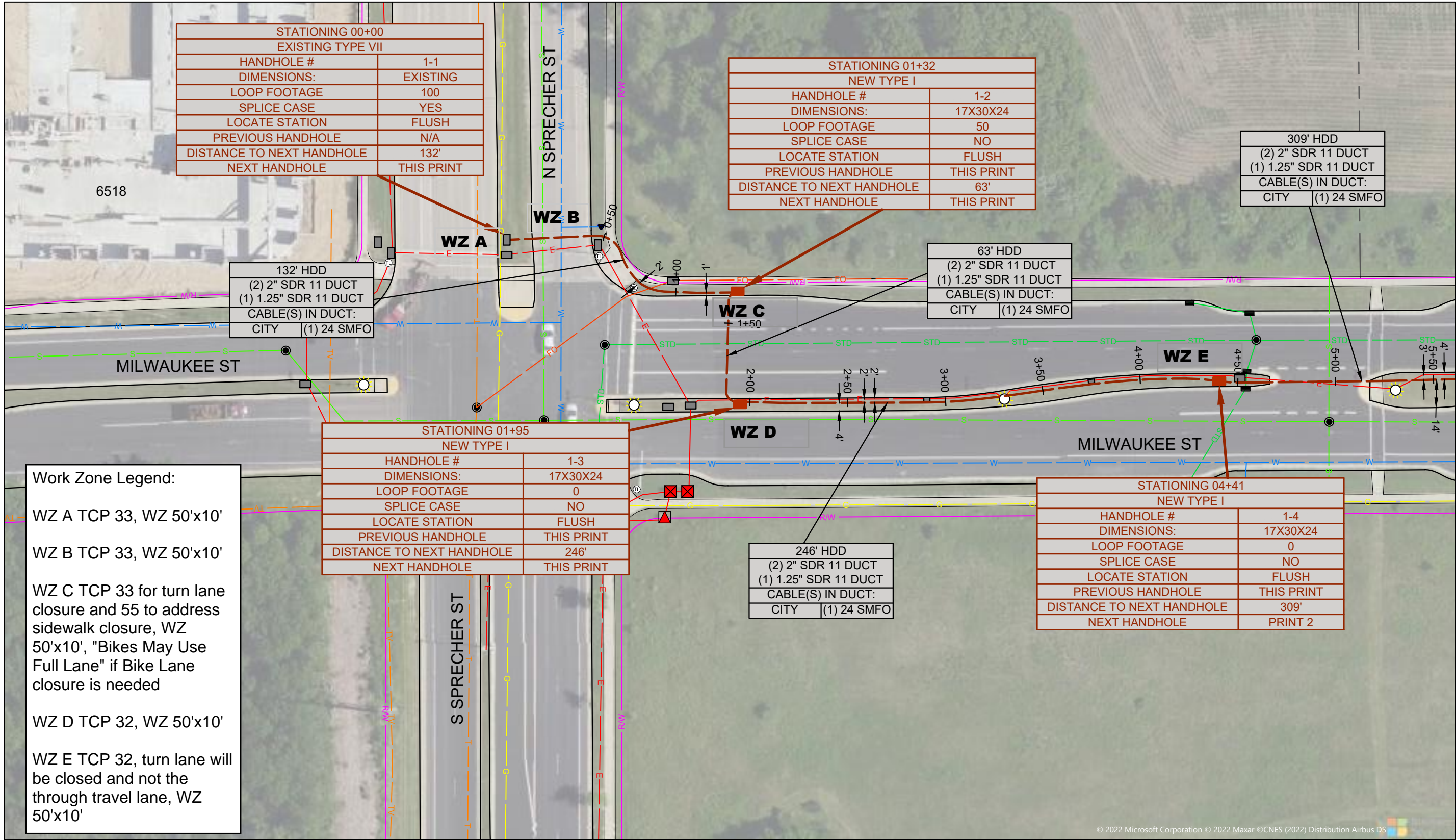
Multimedia Communications & Engineering, Inc.
PO Box 11064 Green Bay, WI 54307
P: 920.301.7900 | 877.870.6968



CITY OF MADISON
DOOR CREEK PARK CONNECTION

SHEET GROUP:
PLACEMENT DETAILS

SHEET ID:
P1



STATIONING 00+00	
EXISTING TYPE VII	
HANDHOLE #	1-1
DIMENSIONS:	EXISTING
LOOP FOOTAGE	100
SPLICE CASE	YES
LOCATE STATION	FLUSH
PREVIOUS HANDHOLE	N/A
DISTANCE TO NEXT HANDHOLE	132'
NEXT HANDHOLE	THIS PRINT

STATIONING 01+32	
NEW TYPE I	
HANDHOLE #	1-2
DIMENSIONS:	17X30X24
LOOP FOOTAGE	50
SPLICE CASE	NO
LOCATE STATION	FLUSH
PREVIOUS HANDHOLE	THIS PRINT
DISTANCE TO NEXT HANDHOLE	63'
NEXT HANDHOLE	THIS PRINT

309' HDD	
(2) 2" SDR 11 DUCT	
(1) 1.25" SDR 11 DUCT	
CABLE(S) IN DUCT:	
CITY	(1) 24 SMFO

132' HDD	
(2) 2" SDR 11 DUCT	
(1) 1.25" SDR 11 DUCT	
CABLE(S) IN DUCT:	
CITY	(1) 24 SMFO

63' HDD	
(2) 2" SDR 11 DUCT	
(1) 1.25" SDR 11 DUCT	
CABLE(S) IN DUCT:	
CITY	(1) 24 SMFO

STATIONING 01+95	
NEW TYPE I	
HANDHOLE #	1-3
DIMENSIONS:	17X30X24
LOOP FOOTAGE	0
SPLICE CASE	NO
LOCATE STATION	FLUSH
PREVIOUS HANDHOLE	THIS PRINT
DISTANCE TO NEXT HANDHOLE	246'
NEXT HANDHOLE	THIS PRINT

246' HDD	
(2) 2" SDR 11 DUCT	
(1) 1.25" SDR 11 DUCT	
CABLE(S) IN DUCT:	
CITY	(1) 24 SMFO

STATIONING 04+41	
NEW TYPE I	
HANDHOLE #	1-4
DIMENSIONS:	17X30X24
LOOP FOOTAGE	0
SPLICE CASE	NO
LOCATE STATION	FLUSH
PREVIOUS HANDHOLE	THIS PRINT
DISTANCE TO NEXT HANDHOLE	309'
NEXT HANDHOLE	PRINT 2

Work Zone Legend:

WZ A TCP 33, WZ 50'x10'

WZ B TCP 33, WZ 50'x10'

WZ C TCP 33 for turn lane closure and 55 to address sidewalk closure, WZ 50'x10', "Bikes May Use Full Lane" if Bike Lane closure is needed

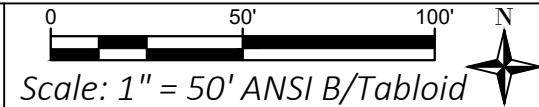
WZ D TCP 32, WZ 50'x10'

WZ E TCP 32, turn lane will be closed and not the through travel lane, WZ 50'x10'

SEE SHEET 2



Multimedia Communications & Engineering, Inc.
 PO Box 11064 Green Bay, WI 54307
 P: 920.301.7900 | 877.870.6968



CITY OF MADISON
 DOOR CREEK PARK CONNECTION

SHEET GROUP:
 1:50 Scaled Plans

SHEET ID:
 01

PERMITS REQUIRED ON THIS SHEET: CITY OF MADISON RIGHT OF WAY PERMIT

Print Date: 8.3.2023

Page 5 of 11

SEE SHEET 1

SEE SHEET 3

STATIONING 07+50	
NEW TYPE I	
HANDHOLE #	2-1
DIMENSIONS:	17X30X24
LOOP FOOTAGE	0
SPLICE CASE	NO
LOCATE STATION	FLUSH
PREVIOUS HANDHOLE	PRINT 1
DISTANCE TO NEXT HANDHOLE	118'
NEXT HANDHOLE	THIS PRINT

118' HDD
(2) 2" SDR 11 DUCT
(1) 1.25" SDR 11 DUCT
CABLE(S) IN DUCT:
CITY (1) 24 SMFO

505' HDD
(2) 2" SDR 11 DUCT
(1) 1.25" SDR 11 DUCT
CABLE(S) IN DUCT:
CITY (1) 24 SMFO

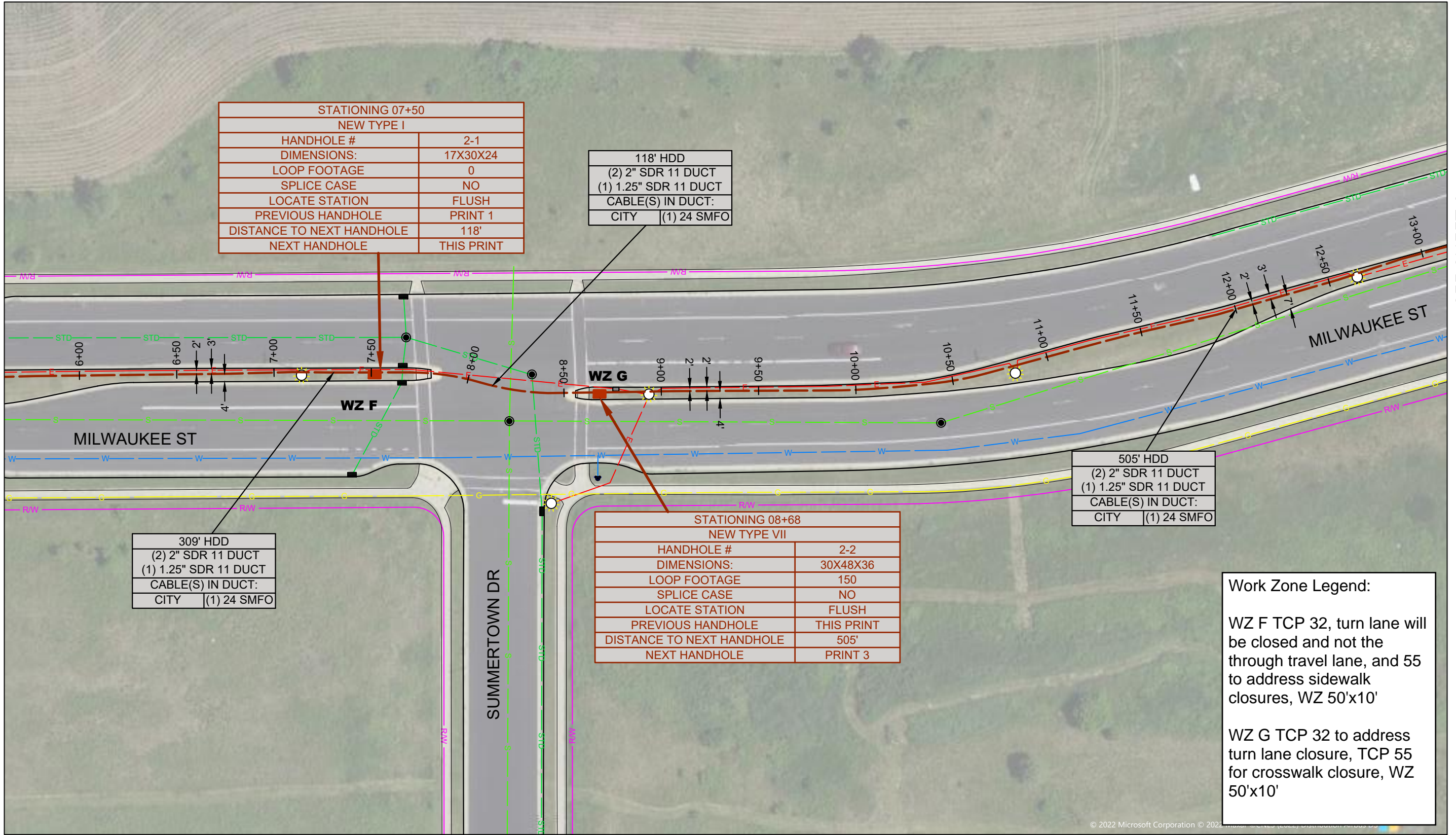
309' HDD
(2) 2" SDR 11 DUCT
(1) 1.25" SDR 11 DUCT
CABLE(S) IN DUCT:
CITY (1) 24 SMFO

STATIONING 08+68	
NEW TYPE VII	
HANDHOLE #	2-2
DIMENSIONS:	30X48X36
LOOP FOOTAGE	150
SPLICE CASE	NO
LOCATE STATION	FLUSH
PREVIOUS HANDHOLE	THIS PRINT
DISTANCE TO NEXT HANDHOLE	505'
NEXT HANDHOLE	PRINT 3

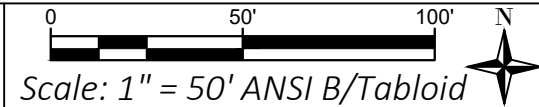
Work Zone Legend:

WZ F TCP 32, turn lane will be closed and not the through travel lane, and 55 to address sidewalk closures, WZ 50'x10'

WZ G TCP 32 to address turn lane closure, TCP 55 for crosswalk closure, WZ 50'x10'



Multimedia Communications & Engineering, Inc.
 PO Box 11064 Green Bay, WI 54307
 P: 920.301.7900 | 877.870.6968



CITY OF MADISON
 DOOR CREEK PARK CONNECTION

SHEET GROUP:
 1:50 Scaled Plans

SHEET ID:
 02

PERMITS REQUIRED ON THIS SHEET: CITY OF MADISON RIGHT OF WAY PERMIT

Print Date: 8.3.2023

Page 6 of 11

CAUTION - ANR PIPELINES; Contractor should coordinate DD at the ANR pipelines crossing with TC Energy. ANR/TC Energy Representative(s) must be present on site at the time of DD at the ANR crossing unless ANR consider it unnecessary. Contact ANR 7 days prior to DD at the crossing:
 Jason Jensen
 608-449-4640
 jason_jensen@tcenergy.com

STATIONING 13+73 NEW TYPE V	
HANDHOLE #	3-1
DIMENSIONS:	24X36X36
LOOP FOOTAGE	75
SPLICE CASE	NO
LOCATE STATION	FLUSH
PREVIOUS HANDHOLE	PRINT 2
DISTANCE TO NEXT HANDHOLE	183'
NEXT HANDHOLE	THIS PRINT

STATIONING 18+14 NEW TYPE I	
HANDHOLE #	3-3
DIMENSIONS:	17X30X24
LOOP FOOTAGE	0
SPLICE CASE	NO
LOCATE STATION	FLUSH
PREVIOUS HANDHOLE	THIS PRINT
DISTANCE TO NEXT HANDHOLE	380'
NEXT HANDHOLE	PRINT 4

183' HDD	(2) 2" SDR 11 DUCT	(1) 1.25" SDR 11 DUCT	CABLE(S) IN DUCT:	CITY	(1) 24 SMFO
----------	--------------------	-----------------------	-------------------	------	-------------

258' HDD	(2) 2" SDR 11 DUCT	(1) 1.25" SDR 11 DUCT	CABLE(S) IN DUCT:	CITY	(1) 24 SMFO
----------	--------------------	-----------------------	-------------------	------	-------------

380' HDD	(2) 2" SDR 11 DUCT	(1) 1.25" SDR 11 DUCT	CABLE(S) IN DUCT:	CITY	(1) 24 SMFO
----------	--------------------	-----------------------	-------------------	------	-------------

505' HDD	(2) 2" SDR 11 DUCT	(1) 1.25" SDR 11 DUCT	CABLE(S) IN DUCT:	CITY	(1) 24 SMFO
----------	--------------------	-----------------------	-------------------	------	-------------

STATIONING 15+56 NEW TYPE I	
HANDHOLE #	3-2
DIMENSIONS:	17X30X24
LOOP FOOTAGE	0
SPLICE CASE	NO
LOCATE STATION	FLUSH
PREVIOUS HANDHOLE	THIS PRINT
DISTANCE TO NEXT HANDHOLE	258'
NEXT HANDHOLE	THIS PRINT

Work Zone Legend:

WZ H TCP 32, turn lane will be closed and not the through travel lane, TCP 55 to address crosswalk closure, WZ 50'x10'

WZ I TCP 32, WZ 50'x10'

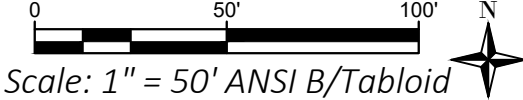
WZ J TCP 32, turn lane will be closed and not the through travel lane, WZ 50'x10'

SEE SHEET 2

SEE SHEET 4



Multimedia Communications & Engineering, Inc.
 PO Box 11064 Green Bay, WI 54307
 P: 920.301.7900 | 877.870.6968



CITY OF MADISON
 DOOR CREEK PARK CONNECTION

SHEET GROUP:
 1:50 Scaled Plans

SHEET ID:
 03

PERMITS REQUIRED ON THIS SHEET: CITY OF MADISON RIGHT OF WAY PERMIT

Print Date: 8.3.2023

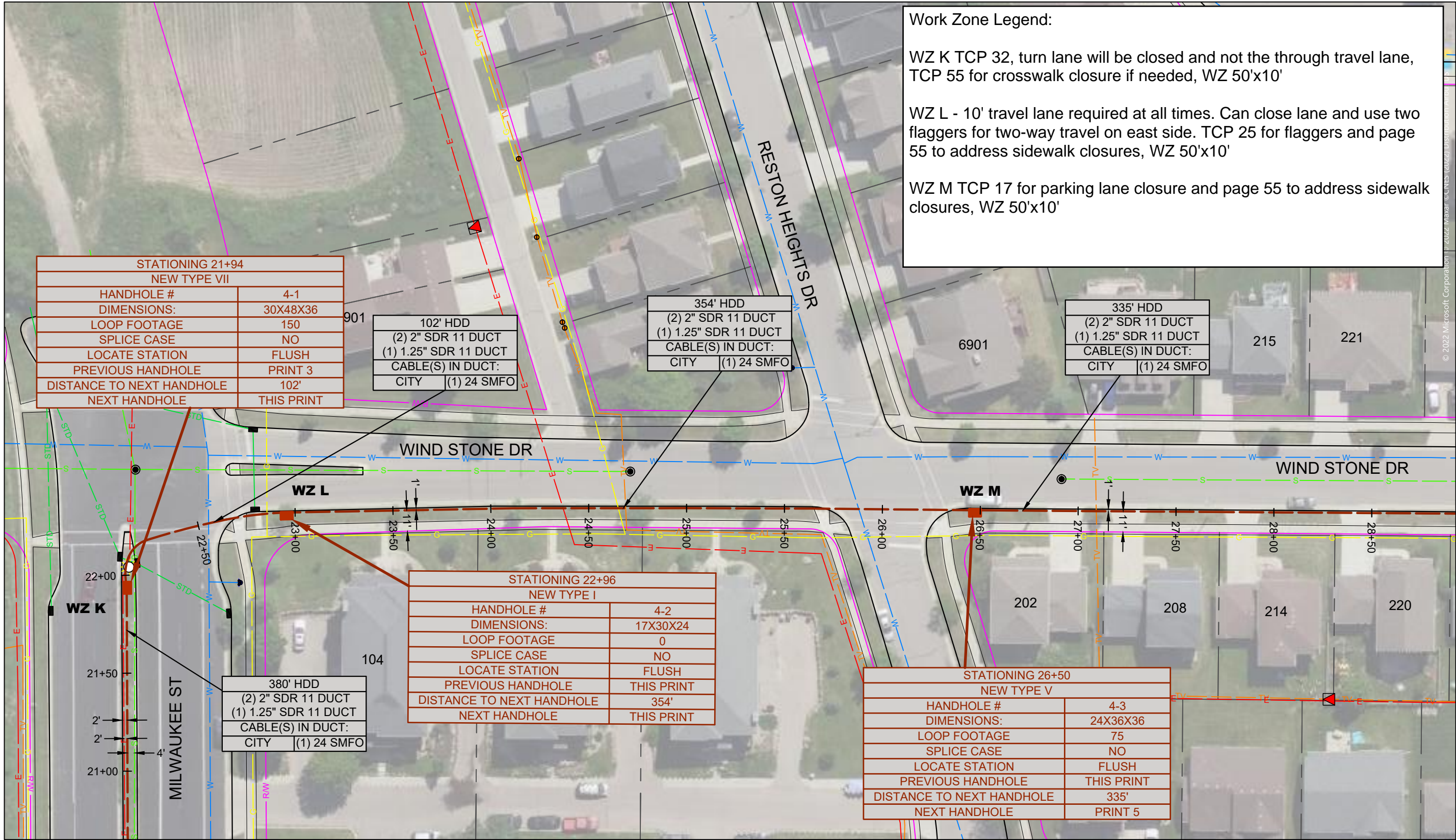
Page 7 of 11

Work Zone Legend:

WZ K TCP 32, turn lane will be closed and not the through travel lane, TCP 55 for crosswalk closure if needed, WZ 50'x10'

WZ L - 10' travel lane required at all times. Can close lane and use two flaggers for two-way travel on east side. TCP 25 for flaggers and page 55 to address sidewalk closures, WZ 50'x10'

WZ M TCP 17 for parking lane closure and page 55 to address sidewalk closures, WZ 50'x10'



STATIONING 21+94	
NEW TYPE VII	
HANDHOLE #	4-1
DIMENSIONS:	30X48X36
LOOP FOOTAGE	150
SPLICE CASE	NO
LOCATE STATION	FLUSH
PREVIOUS HANDHOLE	PRINT 3
DISTANCE TO NEXT HANDHOLE	102'
NEXT HANDHOLE	THIS PRINT

102' HDD
(2) 2" SDR 11 DUCT
(1) 1.25" SDR 11 DUCT
CABLE(S) IN DUCT:
CITY (1) 24 SMFO

354' HDD
(2) 2" SDR 11 DUCT
(1) 1.25" SDR 11 DUCT
CABLE(S) IN DUCT:
CITY (1) 24 SMFO

335' HDD
(2) 2" SDR 11 DUCT
(1) 1.25" SDR 11 DUCT
CABLE(S) IN DUCT:
CITY (1) 24 SMFO

STATIONING 22+96	
NEW TYPE I	
HANDHOLE #	4-2
DIMENSIONS:	17X30X24
LOOP FOOTAGE	0
SPLICE CASE	NO
LOCATE STATION	FLUSH
PREVIOUS HANDHOLE	THIS PRINT
DISTANCE TO NEXT HANDHOLE	354'
NEXT HANDHOLE	THIS PRINT

380' HDD
(2) 2" SDR 11 DUCT
(1) 1.25" SDR 11 DUCT
CABLE(S) IN DUCT:
CITY (1) 24 SMFO

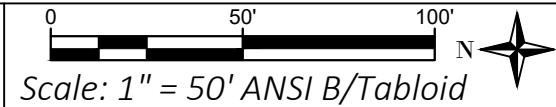
STATIONING 26+50	
NEW TYPE V	
HANDHOLE #	4-3
DIMENSIONS:	24X36X36
LOOP FOOTAGE	75
SPLICE CASE	NO
LOCATE STATION	FLUSH
PREVIOUS HANDHOLE	THIS PRINT
DISTANCE TO NEXT HANDHOLE	335'
NEXT HANDHOLE	PRINT 5

SEE SHEET 5

SEE SHEET 3



Multimedia Communications & Engineering, Inc.
 PO Box 11064 Green Bay, WI 54307
 P: 920.301.7900 | 877.870.6968



CITY OF MADISON
 DOOR CREEK PARK CONNECTION

SHEET GROUP:
 1:50 Scaled Plans

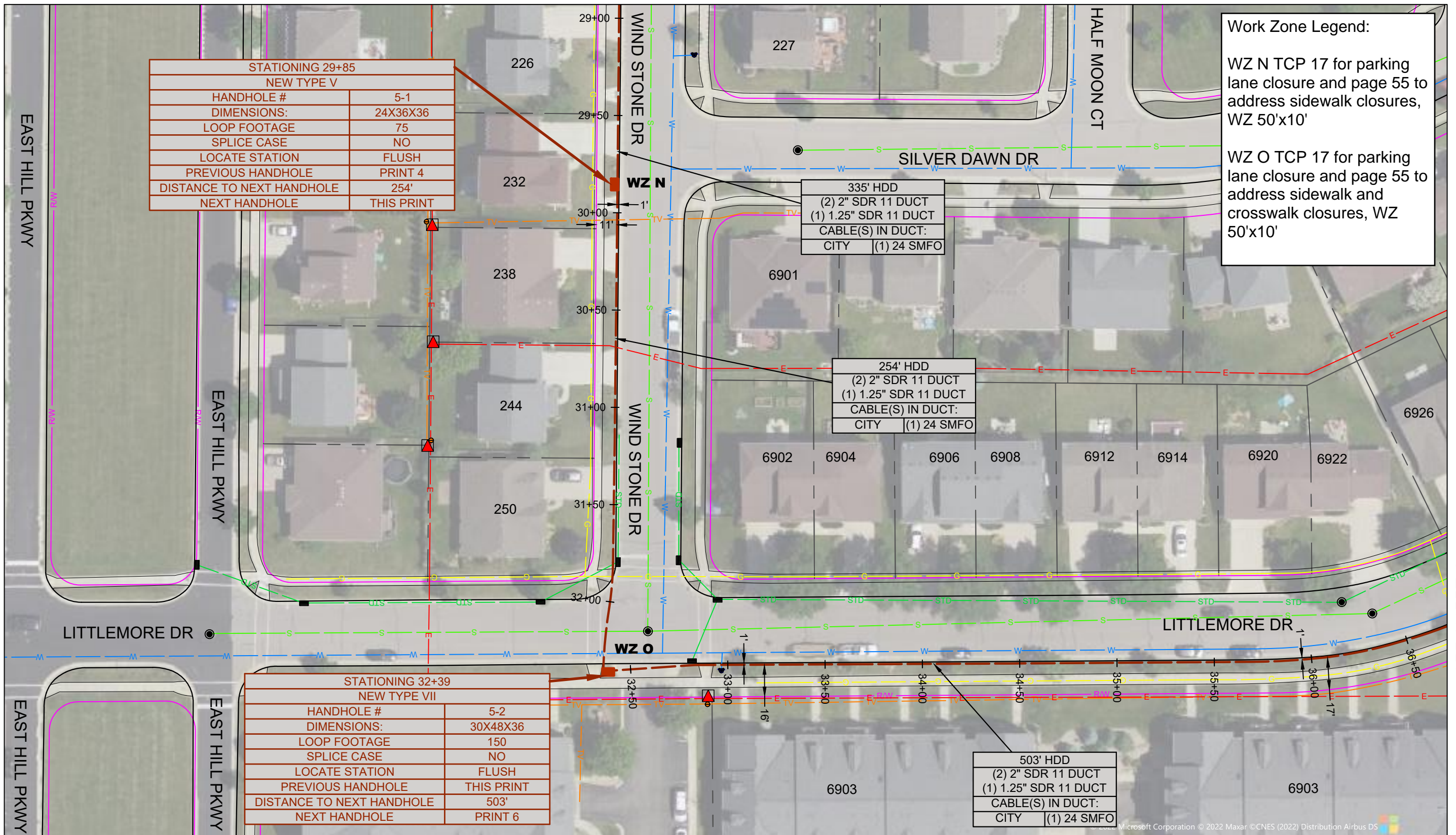
SHEET ID:
 04

PERMITS REQUIRED ON THIS SHEET: CITY OF MADISON RIGHT OF WAY PERMIT

Print Date: 8.3.2023

Page 8 of 11

SEE SHEET 4



Work Zone Legend:

WZ N TCP 17 for parking lane closure and page 55 to address sidewalk closures, WZ 50'x10'

WZ O TCP 17 for parking lane closure and page 55 to address sidewalk and crosswalk closures, WZ 50'x10'

STATIONING 29+85	
NEW TYPE V	
HANDHOLE #	5-1
DIMENSIONS:	24X36X36
LOOP FOOTAGE	75
SPLICE CASE	NO
LOCATE STATION	FLUSH
PREVIOUS HANDHOLE	PRINT 4
DISTANCE TO NEXT HANDHOLE	254'
NEXT HANDHOLE	THIS PRINT

335' HDD
 (2) 2" SDR 11 DUCT
 (1) 1.25" SDR 11 DUCT
 CABLE(S) IN DUCT:
 CITY (1) 24 SMFO

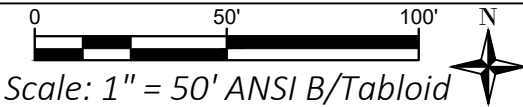
254' HDD
 (2) 2" SDR 11 DUCT
 (1) 1.25" SDR 11 DUCT
 CABLE(S) IN DUCT:
 CITY (1) 24 SMFO

503' HDD
 (2) 2" SDR 11 DUCT
 (1) 1.25" SDR 11 DUCT
 CABLE(S) IN DUCT:
 CITY (1) 24 SMFO

STATIONING 32+39	
NEW TYPE VII	
HANDHOLE #	5-2
DIMENSIONS:	30X48X36
LOOP FOOTAGE	150
SPLICE CASE	NO
LOCATE STATION	FLUSH
PREVIOUS HANDHOLE	THIS PRINT
DISTANCE TO NEXT HANDHOLE	503'
NEXT HANDHOLE	PRINT 6



Multimedia Communications & Engineering, Inc.
 PO Box 11064 Green Bay, WI 54307
 P: 920.301.7900 | 877.870.6968



CITY OF MADISON
 DOOR CREEK PARK CONNECTION

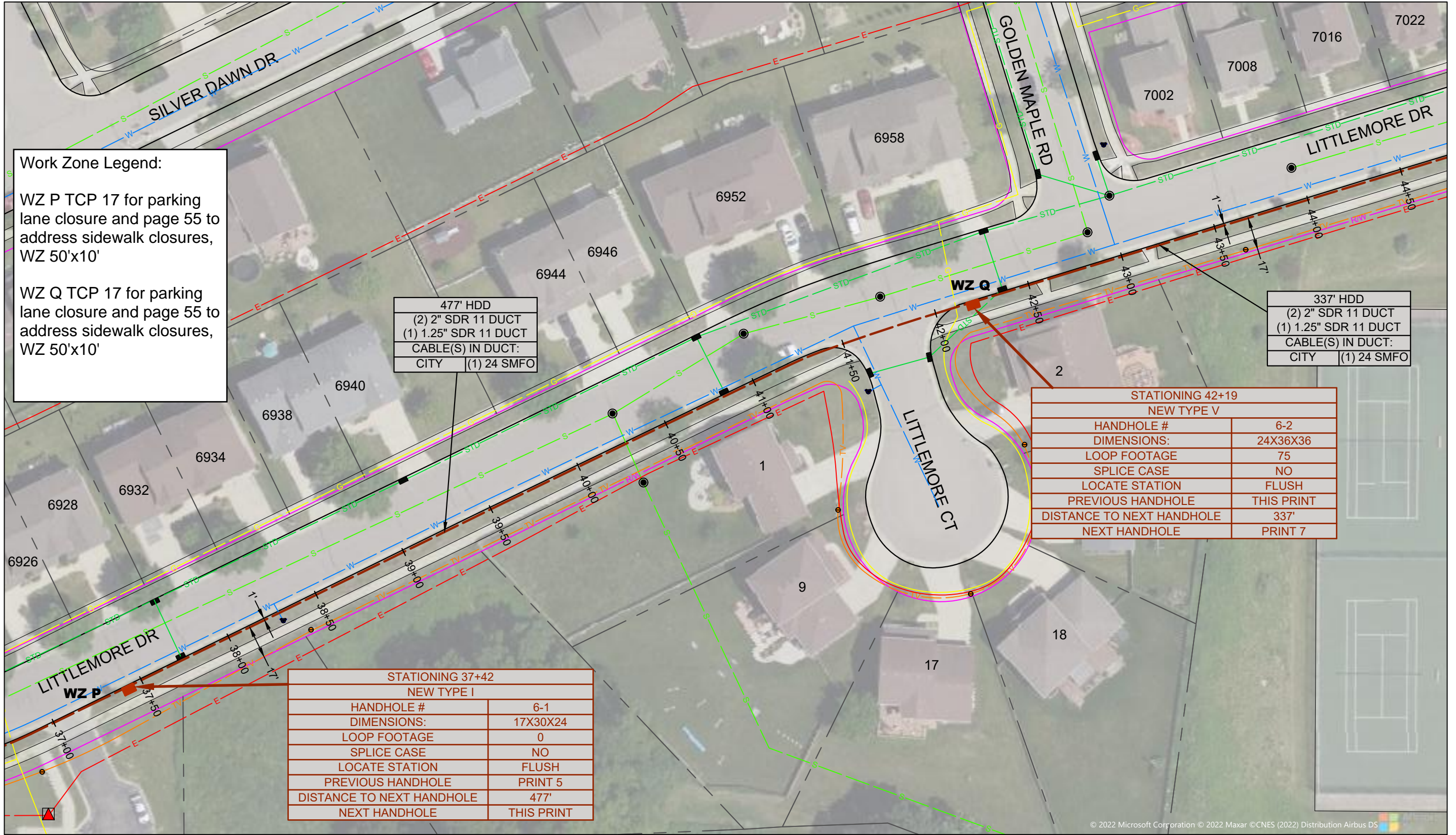
SHEET GROUP:
 1:50 Scaled Plans

SHEET ID:
 05

PERMITS REQUIRED ON THIS SHEET: CITY OF MADISON RIGHT OF WAY PERMIT

Print Date: 8.3.2023

Page 9 of 11



Work Zone Legend:

WZ P TCP 17 for parking lane closure and page 55 to address sidewalk closures, WZ 50'x10'

WZ Q TCP 17 for parking lane closure and page 55 to address sidewalk closures, WZ 50'x10'

477' HDD	
(2) 2" SDR 11 DUCT	
(1) 1.25" SDR 11 DUCT	
CABLE(S) IN DUCT:	
CITY	(1) 24 SMFO

337' HDD	
(2) 2" SDR 11 DUCT	
(1) 1.25" SDR 11 DUCT	
CABLE(S) IN DUCT:	
CITY	(1) 24 SMFO

STATIONING 42+19	
NEW TYPE V	
HANDHOLE #	6-2
DIMENSIONS:	24X36X36
LOOP FOOTAGE	75
SPLICE CASE	NO
LOCATE STATION	FLUSH
PREVIOUS HANDHOLE	THIS PRINT
DISTANCE TO NEXT HANDHOLE	337'
NEXT HANDHOLE	PRINT 7

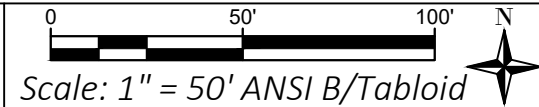
STATIONING 37+42	
NEW TYPE I	
HANDHOLE #	6-1
DIMENSIONS:	17X30X24
LOOP FOOTAGE	0
SPLICE CASE	NO
LOCATE STATION	FLUSH
PREVIOUS HANDHOLE	PRINT 5
DISTANCE TO NEXT HANDHOLE	477'
NEXT HANDHOLE	THIS PRINT

SEE SHEET 5

SEE SHEET 7



Multimedia Communications & Engineering, Inc.
 PO Box 11064 Green Bay, WI 54307
 P: 920.301.7900 | 877.870.6968



CITY OF MADISON
 DOOR CREEK PARK CONNECTION

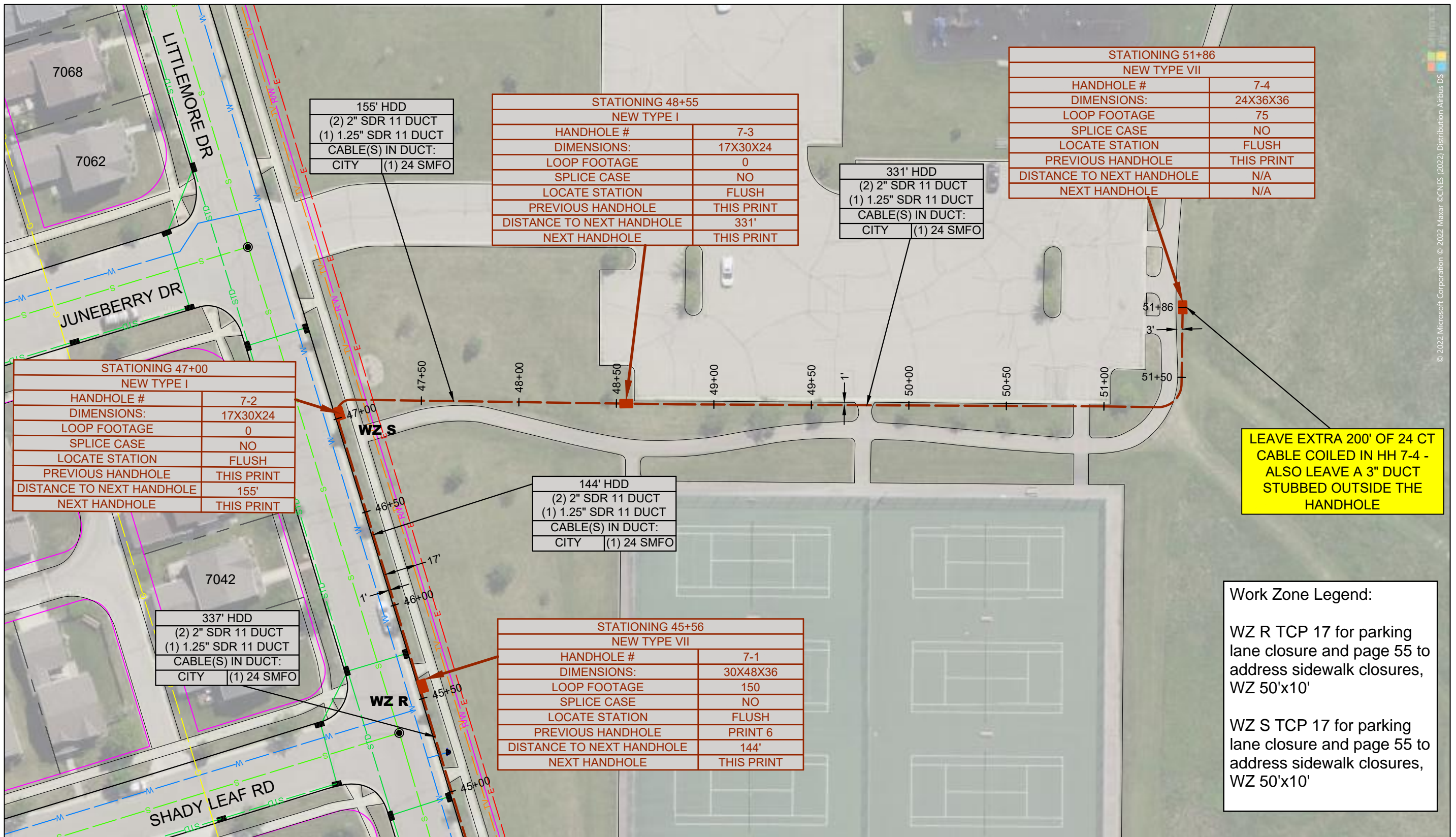
SHEET GROUP:
 1:50 Scaled Plans

SHEET ID:
 06

PERMITS REQUIRED ON THIS SHEET: CITY OF MADISON RIGHT OF WAY PERMIT

Print Date: 8.3.2023

Page 10 of 11



© 2022 Microsoft Corporation © 2022 Maxar © CNES (2022) Distribution Airbus DS

STATIONING 47+00 NEW TYPE I	
HANDHOLE #	7-2
DIMENSIONS:	17X30X24
LOOP FOOTAGE	0
SPLICE CASE	NO
LOCATE STATION	FLUSH
PREVIOUS HANDHOLE	THIS PRINT
DISTANCE TO NEXT HANDHOLE	155'
NEXT HANDHOLE	THIS PRINT

155' HDD	
(2) 2" SDR 11 DUCT	
(1) 1.25" SDR 11 DUCT	
CABLE(S) IN DUCT:	
CITY	(1) 24 SMFO

STATIONING 48+55 NEW TYPE I	
HANDHOLE #	7-3
DIMENSIONS:	17X30X24
LOOP FOOTAGE	0
SPLICE CASE	NO
LOCATE STATION	FLUSH
PREVIOUS HANDHOLE	THIS PRINT
DISTANCE TO NEXT HANDHOLE	331'
NEXT HANDHOLE	THIS PRINT

331' HDD	
(2) 2" SDR 11 DUCT	
(1) 1.25" SDR 11 DUCT	
CABLE(S) IN DUCT:	
CITY	(1) 24 SMFO

STATIONING 51+86 NEW TYPE VII	
HANDHOLE #	7-4
DIMENSIONS:	24X36X36
LOOP FOOTAGE	75
SPLICE CASE	NO
LOCATE STATION	FLUSH
PREVIOUS HANDHOLE	THIS PRINT
DISTANCE TO NEXT HANDHOLE	N/A
NEXT HANDHOLE	N/A

144' HDD	
(2) 2" SDR 11 DUCT	
(1) 1.25" SDR 11 DUCT	
CABLE(S) IN DUCT:	
CITY	(1) 24 SMFO

STATIONING 45+56 NEW TYPE VII	
HANDHOLE #	7-1
DIMENSIONS:	30X48X36
LOOP FOOTAGE	150
SPLICE CASE	NO
LOCATE STATION	FLUSH
PREVIOUS HANDHOLE	PRINT 6
DISTANCE TO NEXT HANDHOLE	144'
NEXT HANDHOLE	THIS PRINT

337' HDD	
(2) 2" SDR 11 DUCT	
(1) 1.25" SDR 11 DUCT	
CABLE(S) IN DUCT:	
CITY	(1) 24 SMFO

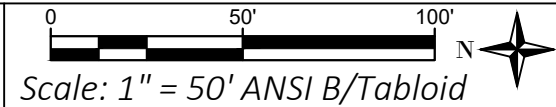
LEAVE EXTRA 200' OF 24 CT CABLE COILED IN HH 7-4 - ALSO LEAVE A 3" DUCT STUBBED OUTSIDE THE HANDHOLE

Work Zone Legend:
 WZ R TCP 17 for parking lane closure and page 55 to address sidewalk closures, WZ 50'x10'
 WZ S TCP 17 for parking lane closure and page 55 to address sidewalk closures, WZ 50'x10'

SEE SHEET 6



Multimedia Communications & Engineering, Inc.
 PO Box 11064 Green Bay, WI 54307
 P: 920.301.7900 | 877.870.6968



CITY OF MADISON
 DOOR CREEK PARK CONNECTION

SHEET GROUP:
 1:50 Scaled Plans

SHEET ID:
 07

PERMITS REQUIRED ON THIS SHEET: CITY OF MADISON RIGHT OF WAY PERMIT

Print Date: 8.3.2023

Page 11 of 11